



INTRODUCING  
**THE SEQUEL**  
TO A BESTSELLER



POWERED BY  
**blox**

**Site Address:** 1st Floor, Shreeji Atlantis,  
Gautam Buddh Marg, Off Marve Road,  
Malad (W), Mumbai- 400 064

**CALL US NOW**  
022 4094 3953

**WRITE US ON**  
passcodebiglife@shreejigroup.net



MahaRERA Reg. No.: Shreeji Atlantis Wing A : P5180004400, Wing B : P51800047335  
and are available at website: <https://maharera.mahaonline.gov.in> under registered projects.  
A51900029429

An aerial photograph of a city, likely Mumbai, India, showing a dense urban landscape with numerous high-rise apartment buildings. A river flows through the city, and mountains are visible in the distance under a clear sky. The image is used as a background for a real estate advertisement.

## Welcome to **SUPERNEST**

Supernest is a destination being developed by Shreeji Group in a way that brings a good lifestyle and transformation to the place. It's a series of developments designed to transform the neighbourhood. Supernest is spread across **10 acres** nestled in the most convenient location of Orlem-Malad with lifestyle amenities just minutes away.

Projects like **Atlantis Tower A, Aspire, Codename Superlife** and **Passcode Big Life** are designed for convenience and a good lifestyle wherein more than **480 families** have already shown their trust & booked their dream abode.

LIVE with views of natural & infrastructural wonders.

Supernest becomes the perfect haven to enjoy life to the fullest. Be it large open spaces to enjoy fresh air, relaxing by the pool or letting the little ones have fun at the play area, one is always spoilt for choice.

Come and enjoy the finest of both worlds at **Shreeji Supernest Malad**.

ACTUAL IMAGE

PRESENTING A  
**Milestone**  
INSPIRED BY A  
**Milestone**



Artist's Impression



Reference Image

Residences  
THAT ARE AS  
Large-Hearted  
AS THEIR RESIDENTS

# A universe THAT celebrates ambition

EXPERIENCE NATURAL  
AND INFRASTRUCTURAL WONDERS



AN IMPOSSIBLE FEAT  
WHICH SHOWS THAT

EVEN THE  
**Best**  
CAN BE  
**Bettered**



Artist's Impression



Reference Image

OUR AMENITIES ARE  
FOR THE ONES  
WHO NEVER SETTLE  
FOR A  
**TWINKLE...BUT A DAZZLE!**

*Grand Entrance Lobby*

FOR THE ONES  
WHO CREATE RIPPLES

FOR THE ONES  
WHO TURN TIDES



Artist's Impression

*Infinity Pool*





Reference Image

SERENADE  
**YOUR TASTE BUDS**

SERENADE  
**MINDS**

*Open Cafe*

OFFER  
HAPPINESS  
THAT  
GROWS



Reference Image

*Kids Play Area*



Reference Image

WE ENDORSE THE  
**GLOBAL DIALOGUES**  
ON  
**SUSTAINABILITY**

---

WE FOLLOW...  
AND PRACTICE IT.

*Provision for EV charging stations*

FOR  
GREEK GODS  
OF THE FUTURE

FOR  
THE DIVAS  
OF TOMORROW



Reference Image

*A State-Of-The-Art-Gym*



Reference Image

DISCOVER  
**ROUTINES**  
THAT  
**ENERGIZE**

*Jogging Track*

A  
PARKING SPACE  
THAT'S AS  
LARGE-HEARTED  
AS YOU



*Guest Parking Space*



## BATHROOM

- Premium sanitary fixtures & CP fittings
- Anti-skid flooring • Ceramic tiled wall
- Instant water heaters, Racold or equivalent
- Naturally ventilated bathroom with an exhaust fan



## KITCHEN

- Granite platform • Provision for water purifier
- Ceramic wall tiled above the platforms
- Exhaust fan • Scratch resistant stainless steel sink



## SECURITY

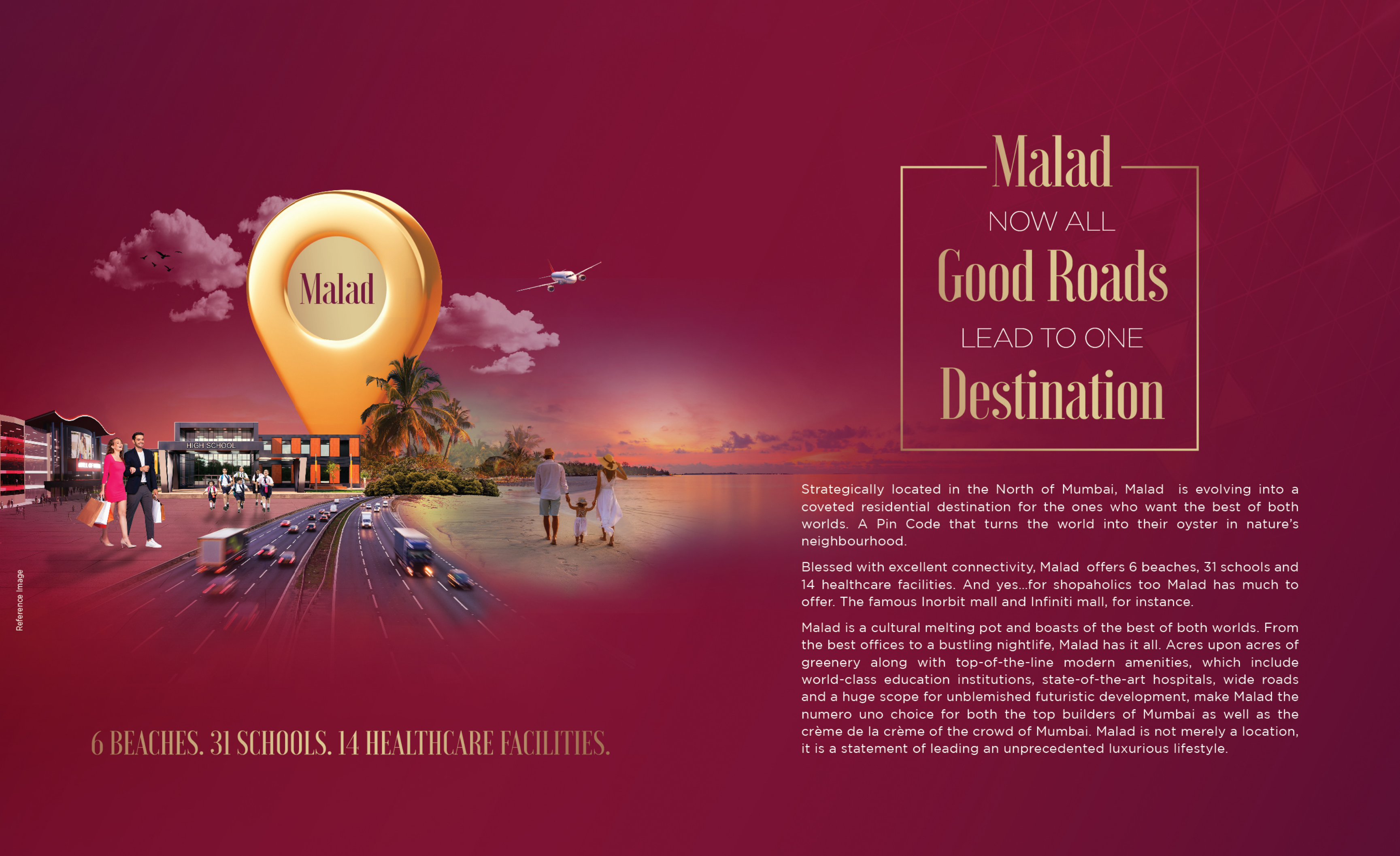
- Advanced fire-fighting systems
- Earthquake resistant structure
- Biometric security system 24 hours CCTV surveillance

# FINE DETAILS FOR AN INCREDIBLE LIFESTYLE



## APARTMENT

- All plans will be with MCGM approval
- Heavy section, anodized aluminum sliding windows
- Elegant, designer finished entrance door and internal door with superior quality fittings
- Ultra-modern elevation
- Vitrified tiled flooring in entire flat
- Vaastu compatible plans
- Gypsum finished internal walls with plastic/flat paint



# Malad

NOW ALL  
**Good Roads**  
LEAD TO ONE  
**Destination**

Strategically located in the North of Mumbai, Malad is evolving into a coveted residential destination for the ones who want the best of both worlds. A Pin Code that turns the world into their oyster in nature's neighbourhood.

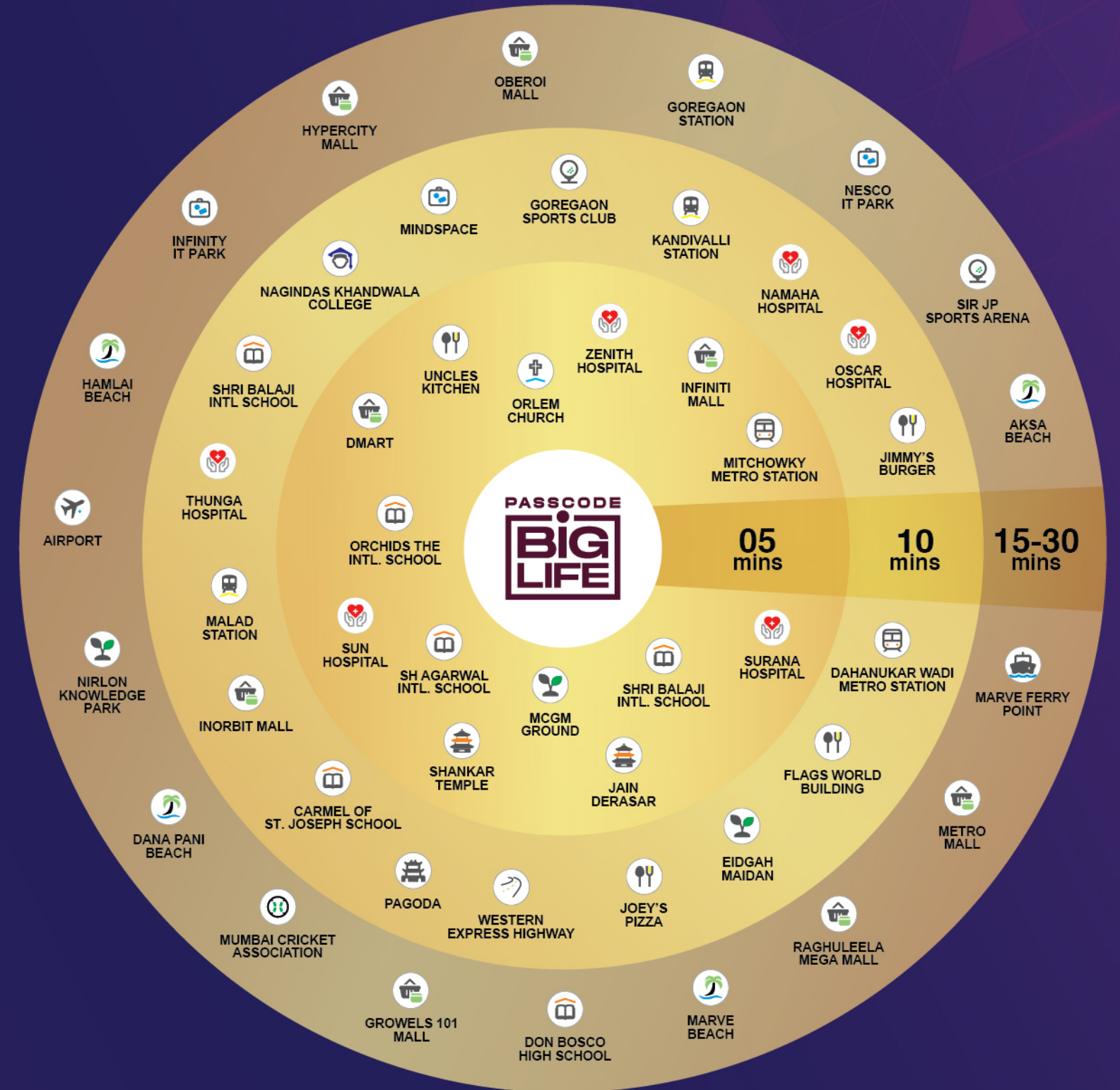
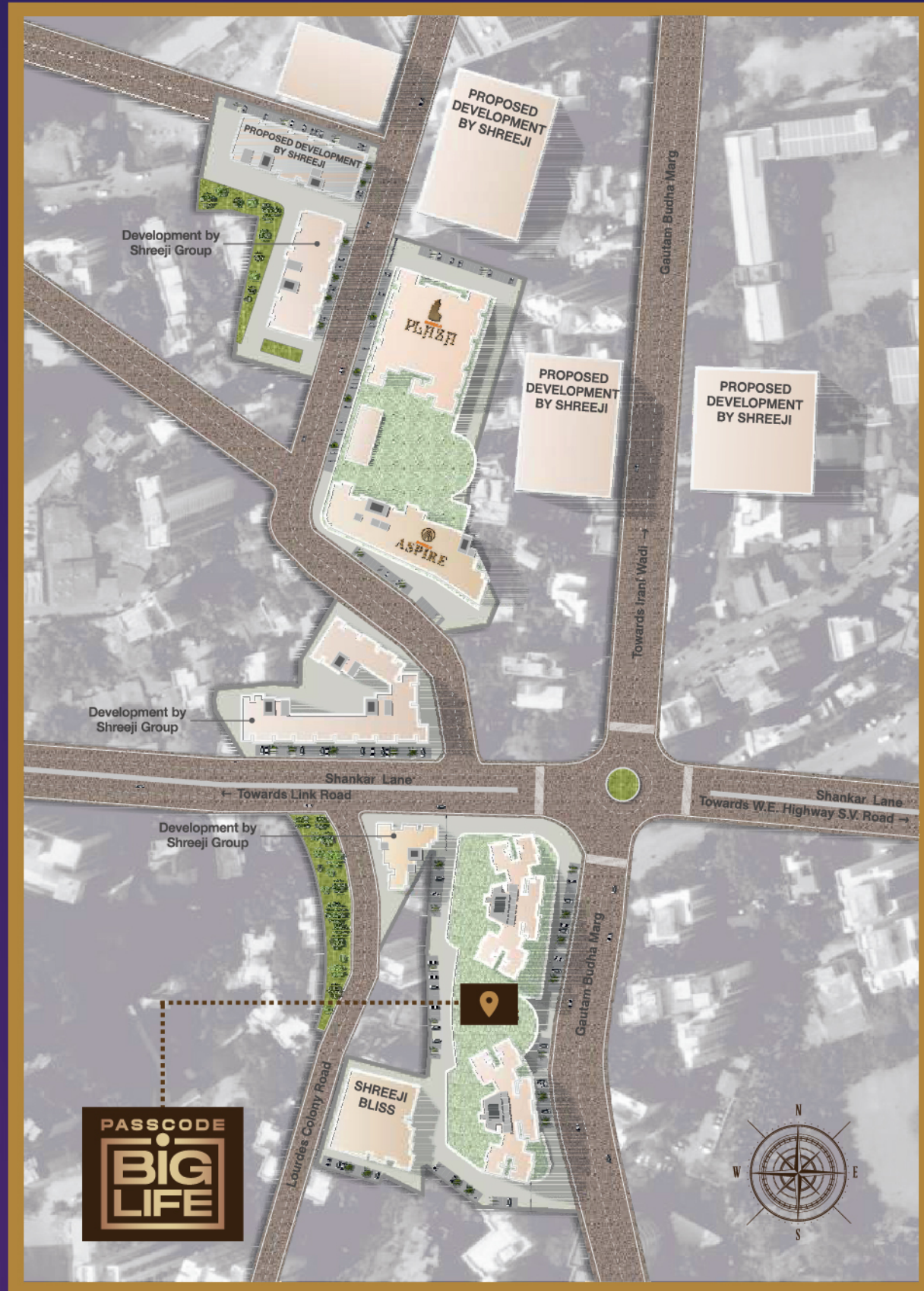
Blessed with excellent connectivity, Malad offers 6 beaches, 31 schools and 14 healthcare facilities. And yes...for shopaholics too Malad has much to offer. The famous Inorbit mall and Infiniti mall, for instance.

Malad is a cultural melting pot and boasts of the best of both worlds. From the best offices to a bustling nightlife, Malad has it all. Acres upon acres of greenery along with top-of-the-line modern amenities, which include world-class education institutions, state-of-the-art hospitals, wide roads and a huge scope for unblemished futuristic development, make Malad the numero uno choice for both the top builders of Mumbai as well as the crème de la crème of the crowd of Mumbai. Malad is not merely a location, it is a statement of leading an unprecedented luxurious lifestyle.

**6 BEACHES. 31 SCHOOLS. 14 HEALTHCARE FACILITIES.**



CONNECT **INSTANTLY** WITH **CITY'S BEST**





The Shreeji Group is a premier real estate development company that focuses on multi family residential, SRA & redevelopment projects. The company believes in creating a home or an office based on an understanding of the stated and unstated consumer needs and preferences.

More than a business venture, Shreeji Group is a coming together of ethically inclined professionals, with an abiding commitment towards delivering value, to their customers and stakeholders. This convergence of diverse proficiencies, supported by moral values, has resulted in a unique people-centric business philosophy.

The core values of the group thus comprise innovation, design excellence, timeliness, fair business practices and commitment towards the environment.

The people-centric and ambitious Shreeji Group is synonymous, with value delivery backed by trust, integrity, competency and timeliness.

Artist's Impressions

